



NATIONAL[®]
PAINTS



TILE COATING SYSTEM



NATIONAL[®] PAINTS

انظمة تايل كوتينغ TILE COATING SYSTEM

| NATIONAL ACRYLIC ROCK | NATIONAL TILE | NATIONAL WALL ROCK EPOXY - POLYURETHANE | NATIONAL ECO SYSTEM |
|--|--|--|--|
| PRIMER NATIONAL ACRYLIC PRIMER (W.B) OR NATIONAL TEX PRIMER MIXING : SINGLE PACK COVERAGE : 6-8 m ² /L PER COAT THINNER : WATER APPLICATION : ROLLER/ BRUSH | PRIMER NATIONAL ACRYLIC PRIMER (W.B) OR NATIONAL TEX PRIMER MIXING : SINGLE PACK COVERAGE : 6-8 m ² /L PER COAT THINNER : WATER APPLICATION : ROLLER/ BRUSH | PRIMER GUARD PRIMER CLEAR/WHITE (2-PACK EPOXY) MIXING : 4 : 1 COVERAGE : 6-8 m ² /L PER COAT THINNER : EPOXY THINNER APPLICATION : ROLLER/ BRUSH | PRIMER NATIONAL ACRYLIC PRIMER (W.B) OR NATIONAL TEX PRIMER MIXING : SINGLE PACK COVERAGE : 6-8 m ² /L PER COAT THINNER : WATER APPLICATION : ROLLER/ BRUSH |
| MIDDLE COAT NUTEX OR TEXO COMPOUND (SPRAY TEXTURE) MIXING : SINGLE PACK COVERAGE : 1.75 m ² /L PER COAT THINNER : WATER APPLICATION : SPRAY | MIDDLE COAT NUTEX OR TEXO COMPOUND (SPRAY TEXTURE) MIXING : SINGLE PACK COVERAGE : 1.75 m ² /L PER COAT THINNER : WATER APPLICATION : SPRAY | MIDDLE COAT INTERGURARD H.B (EPOXY SPRAY TEXTURE) MIXING : 85 : 15 COVERAGE : 1.75 m ² /L PER COAT THINNER : EPOXY THINNER APPLICATION : SPRAY | MIDDLE COAT NUTEX OR TEXO COMPOUND (SPRAY TEXTURE) MIXING : SINGLE PACK COVERAGE : 1.75 m ² /L PER COAT THINNER : WATER APPLICATION : SPRAY |
| TOP COAT (2 COATS) ACRYLIC ROCK (SOLVENT BASED) MIXING : SINGLE PACK COVERAGE : 6-7 m ² /L PER COAT THINNER : ACRYLIC THINNER APPLICATION : ROLLER/BRUSH/SPRAY | TOP COAT (2 COATS) NATIONAL POLYURETHANE MIXING : 4 : 1 COVERAGE : 6 m ² /L PER COAT THINNER : POLYURETHANE THINNER APPLICATION : ROLLER/BRUSH/SPRAY | TOP COAT (2 COATS) NATIONAL POLYURETHANE OR NATIONALTHANE MIXING : 4 : 1 COVERAGE : 6 m ² /L PER COAT THINNER : POLYURETHANE THINNER APPLICATION : ROLLER/BRUSH/SPRAY | TOP COAT (2 COATS) ACRYLIC WEATHER RESIST OR SHIELD TOP COAT (W.B) MIXING : SINGLE PACK COVERAGE : 6-8 m ² /L PER COAT THINNER : WATER APPLICATION : ROLLER/BRUSH/SPRAY |

Note:
For further information on surface preparation & suitable system,
please refer to National Technical Data Sheets.

ملاحظة :
لمزيد من المعلومات عن تحضير الأسطح و نظام الصبغ المناسب،
يرجى الرجوع الى نشرة المواصفات الفنية لمنتجات أصباغ ناشونال.



800 WHITE



10 B 15



08 E 49



00 A 01



10 B 17



06 D 41

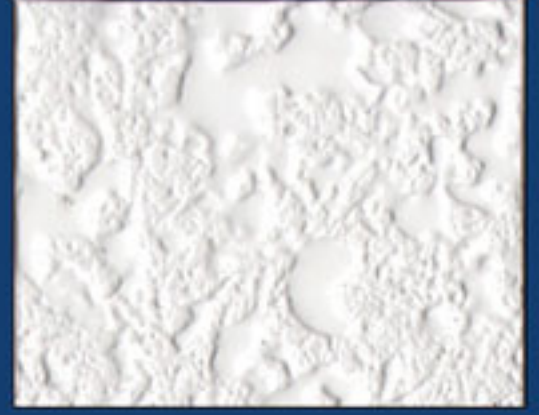
انظمة تايل كوتينغ TILE COATING SYSTEM



08 B 15



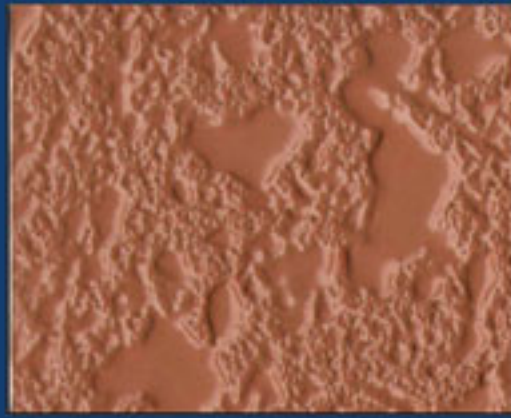
06 C 33



10 A 01



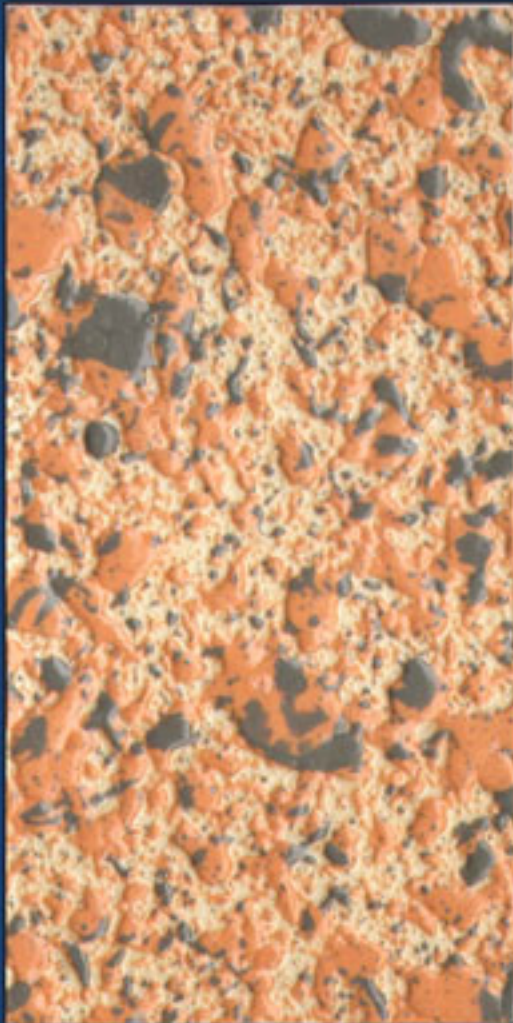
805



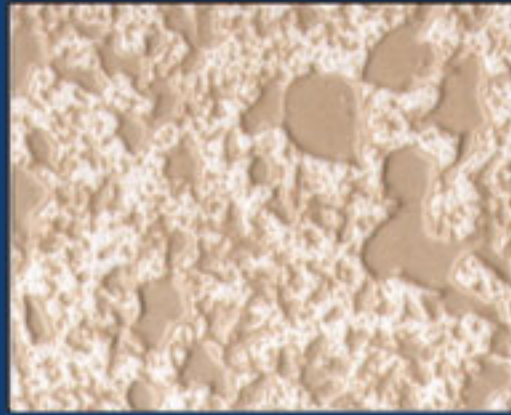
744



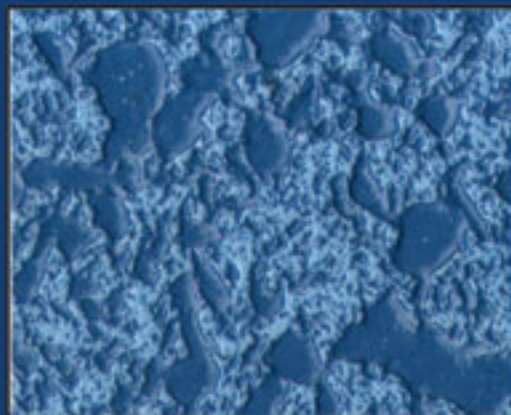
202



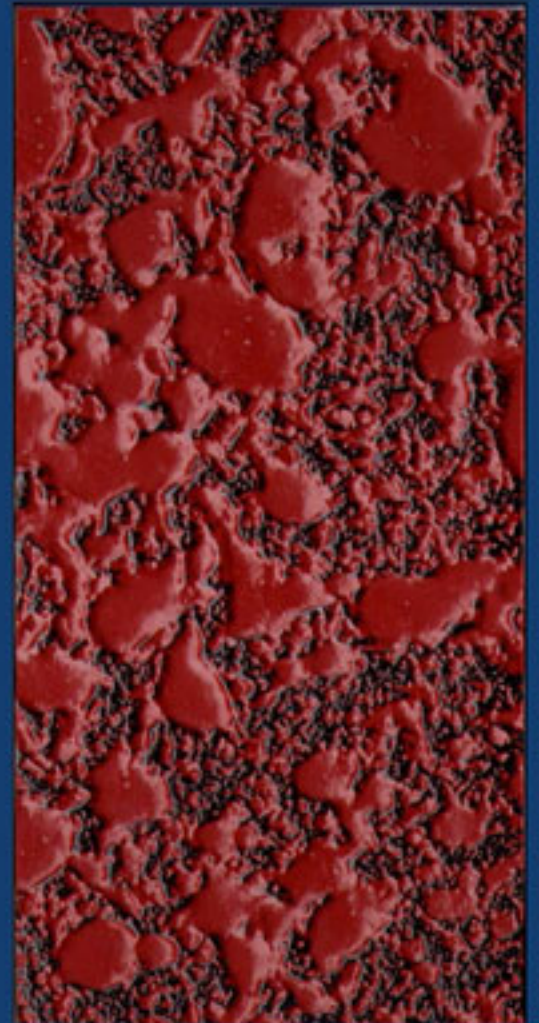
BABY PINK



MUSHROOM



NATIONAL BLUE



MAROXY

National Paints takes no responsibility for slight variations in color reproduction

This shade card supersedes all previous prints

لا تتحمل شركة أصباغ ناشونال مسؤولية الاختلاف البسيط في الألوان المنتجة

بطاقة الألوان هذه تلغي كل بطاقات الألوان السابقة



08 C 31



08 C 33



08 D 41



08 B 17



20 C 33



20 C 35

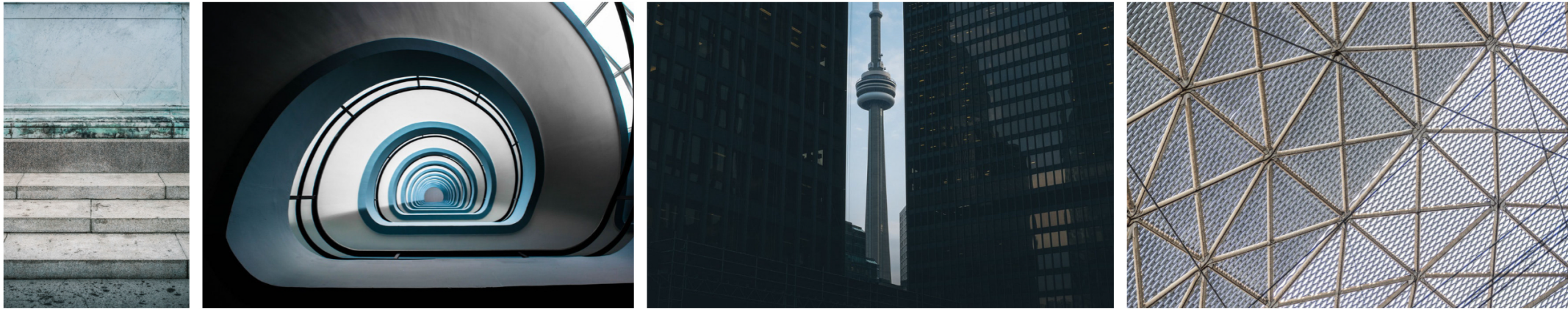
www.kbmtools.com

This product is available and can be ordered from KBM Tools.

Feel free to contact:

Al Khidma Bldg Mat Trading LLC
Al Zubair, Sajja.
Sharjah. United Arab Emirates
06 5361999
sales@kbmtools.com
www.kbmtools.com

KBM TOOLS[®]
BUILDING MATERIALS



build your dreams



with KBM Tools